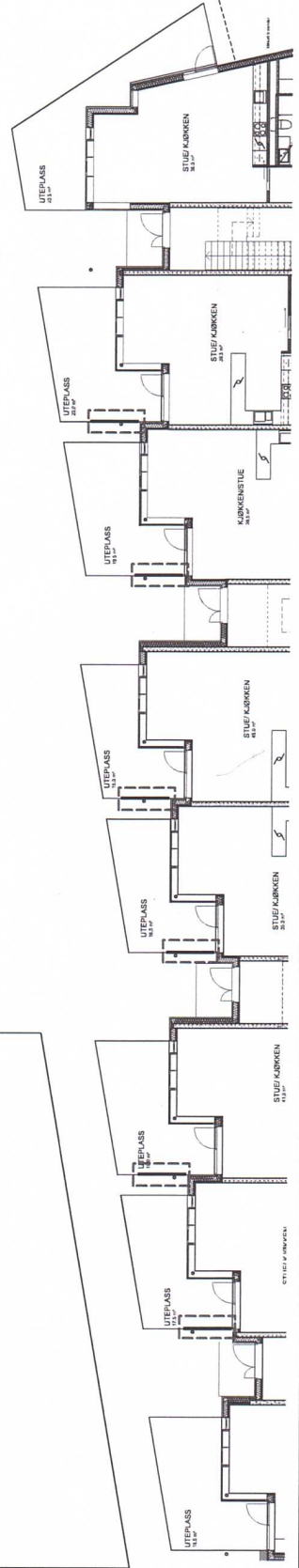
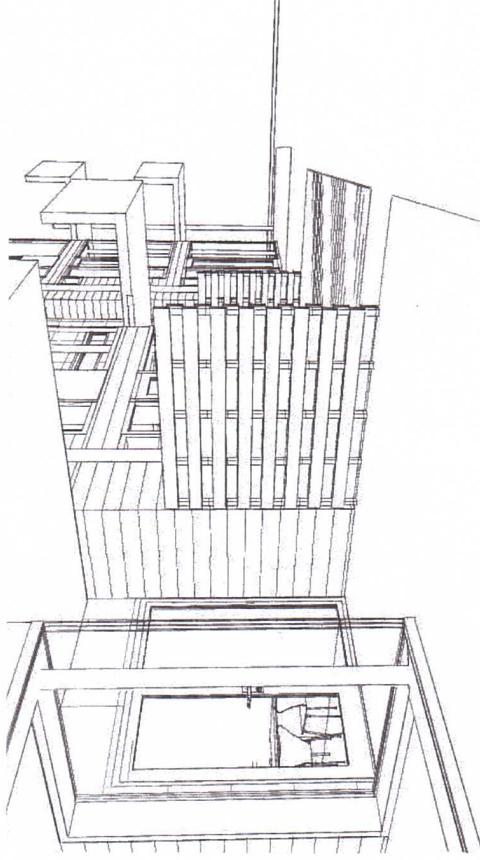
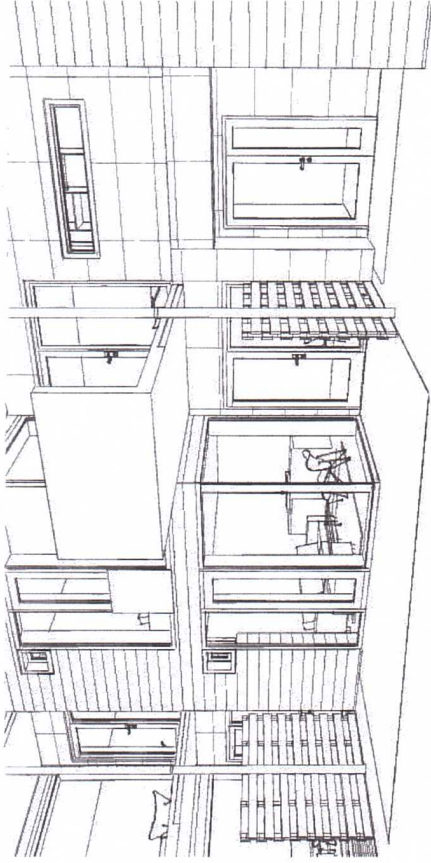
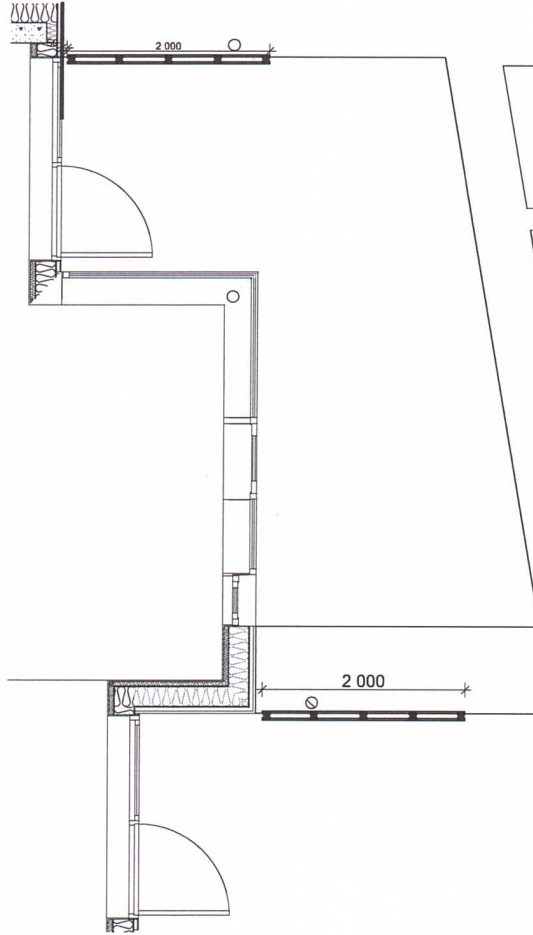
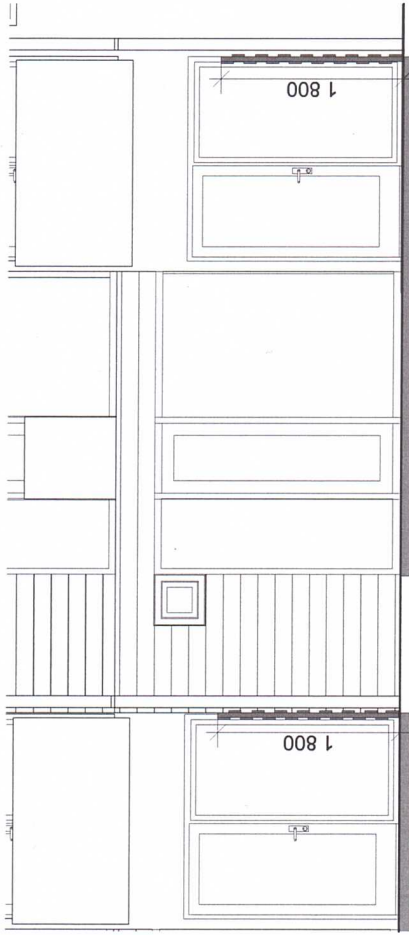


**Levegg**

Stendere 48x48 cc 470mm  
 Liggende trepanel 123x222 avstand 100mm  
 Alt treverk mørke royal oker - tilsvarende fasadekledning  
 Festes med stolpesko i kant terrasse og mulig søyle - NB avstand til søyle.



Prosjekt: <b>BØLERASEN SENTER</b>	Byggherre BØLERASEN SENTER AS	ARK STEIN HALVORSEN AS sivilarkitekt MVAL Snyveien 21 A 0459 Oslo leppeside@sh-arkitekt.no. Tlf. 23 38 70	Dato: 1:50	Fase: 1:200	Tittel: <b>Levegg</b>	Målestokk (A3): 1:50 1:200	Tegningsnr: 1:200	Prosjekt: BØLERASEN SENTER	Dato: 1:50	Fase: 1:200
						Tittel: Levegg			Målestokk (A3): 1:50 1:200	